



Importance of Membership

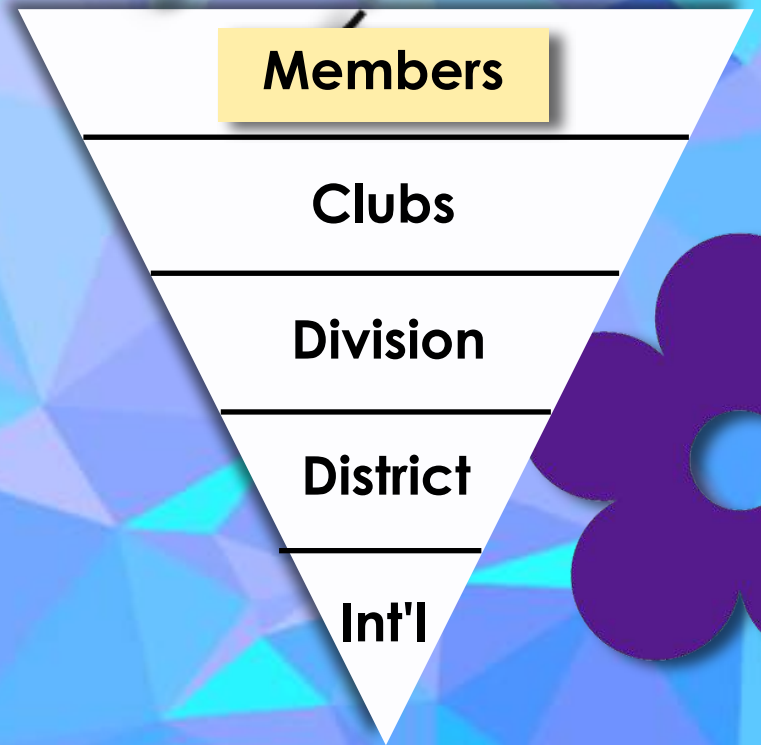


Members are at the top of the membership pyramid because they are the most important part!

Key Club is only able to function and exist with them. It is the dedication of the members that allows us to successfully give back to our communities and fundraise for the preferred charities. Members are also the ones who inspire the other levels of the pyramid to work even harder!

This is why effective membership recruitment is so important! If new members do not join, the membership pyramid and Key Club itself would fall apart. We would not be able to raise awareness about Pediatric Trauma or eliminate maternal neonatal tetanus.

3 new members beyond Retention!



Without members, Key Club International wouldn't even exist!

